



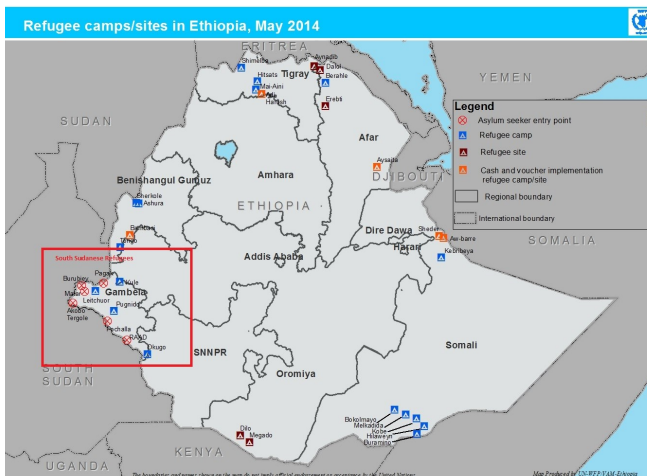
Pamdong Transit center © Mishisalla Beyene /August 2014



World Food Programme

Ethiopia:

Refugee Operation: Influx from South Sudan



In numbers



189,450 South Sudanese refugees arrived since mid December 2013 (250,650 South Sudanese overall as at 31 August-UNHCR Population of Concern report 31 July 2014)

635,950 Total refugee in Ethiopia as at 31 August 2014. (UNHCR Population of Concern report 31 August 2014)

17,500 mt food dispatched to South Sudan refugees in Gambella in Ethiopia since December 2013

24,500 mt food dispatched (cross-border) to South Sudan

Funding Update



US\$56 million Shortfall until March 2015 for entire Refugee operation

US\$30 million required for 300,000 South Sudan refugees until December 2014

Highlights

- According to UNHCR as of 26 September about **189,450** refugees had arrived to Ethiopia from South Sudan since mid-December 2013. The main entry points are Pagak, Burubiey and Akobo Tergole.
- The road inaccessibility to camps due to the floods continues to affect all humanitarian interventions in Leitchuor camp.
- WFP Ethiopia has so far moved over **24,500 mt** of food commodities to South Sudan by air, road and river through the cross-border operation.

Situation Update

- Registration and relocation processes continue to be on halt due to flooded roads and is likely to be the case till end of October until rainy season is over. According to UNHCR as of 25 September, the total population relocated to the camps remains to be 157,570 individuals.
- The arrival rates has continued to steadily decline. Average number of arrivals in end September was 96 people per day.

WFP Response

Food Assistance



- WFP with Administration for Refugees and Returnees Affairs (ARRA) will conduct the October monthly General Food Distributions (GFD) in the Gambella camps in the first weeks of October. Distributions for refugees in Nip Nip and Leitchuor will be conducted at Leitchuor due to access related challenges. For the delivery of food to the camps both inland and river transportation is used.
- The second two weeks GFD ration was delivered to Matar transit center and distribution is ongoing for the estimated 10,000 refugees.
- WFP and its nutrition partners –GOAL, ACF and Concern Worldwide- continue to provide blanket and targeted supplementary feeding programmes in Leitchuor, Tierkidi, Kule and Nip Nip camps. Sufficient nutrition food is preposition in most of the camps in the midst of transportation challenges due to the floods.

Logistics

Cross border operation

- WFP's cross-border operation to transship food to South Sudan commenced in March 2014. The operation uses air, river and road as mode of transport. As of 2 October a total close to 24,400 mt was dispatched. 75 percent of the dispatch was carried out through the air operation that has three bases– in Gambella, Assosa and Jimma. The total daily airdrop/airlift capacity is 10,750mt per month (based on daily 5 airdrops from Gambella, 6 airlifts from Assosa, and 5 airdrops from Jimma).
- As of 2 October, cross-border dispatches by mode of transport was completed as follows:

Cross-border dispatches by mode of transport as of 2 October				
	Cereal	Pulses	Oil	Total
Air	17,977	789	277	17,460
River	2,914	183	161	3,170
Road	1,846	248	93	2,187
Total	22,737	1,220	531	24,488

Partnerships

For the current South Sudanese refugee influx response, WFP partners with the Government's Refugee Agency: the Administration for Refugees and Returnees Affairs (ARRA), with UNHCR, and with NGOs ACF, GOAL and Concern Worldwide for the nutritional support.

Resourcing Update

Until March 2015 (end of the current project) the Refugee Operation requires an estimated US\$80 million. During this same period, shortfalls are currently estimated at US\$56 million.

2014 donors to the refugee operation as of end-August 2014:

Canada 



WFP Ethiopia Refugee Operation				
Refugee Operation (PRRO 200365)	Project Duration	Planned number of people	Total requirements Sep 2014 -Mar 2015 (in US\$)	Sep 2014 -Mar 2015 Shortfall (US\$ and %)
	April 2012- March 2015	623,000	80 million	56 million or 70%

Contacts

For more information contact WFP Ethiopia:

E-mail: wfp.addisababa@wfp.org; Mishisalla.beyene@wfp.org or Delphine.dechaux@wfp.org; Tel: +251 115 51 5188

For Media: please contact Melese Awoke: melese.awoke@wfp.org; Tel +251 911 201 981

Stephanie Savariaud: stephanie.savariaud@wfp.org; Tel +251 911 201 976