



923,000*

est. people internally displaced



293,200**

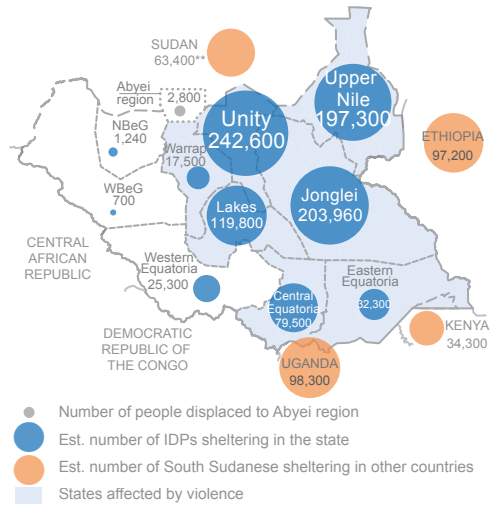
est. people sheltering in neighbouring countries

1,260,900

people provided with assistance

277,000

people assisted through rapid response mechanism



2 in 10 internally displaced people are in not accessible areas



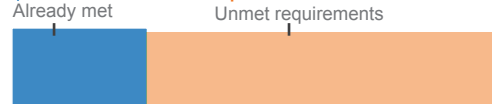
16% of people displaced are in open or rural settings, often in hard to access areas

FUNDING

\$1.27bn required before June 2014

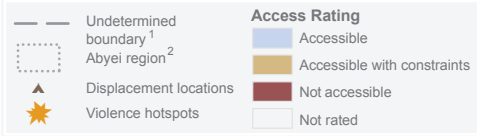
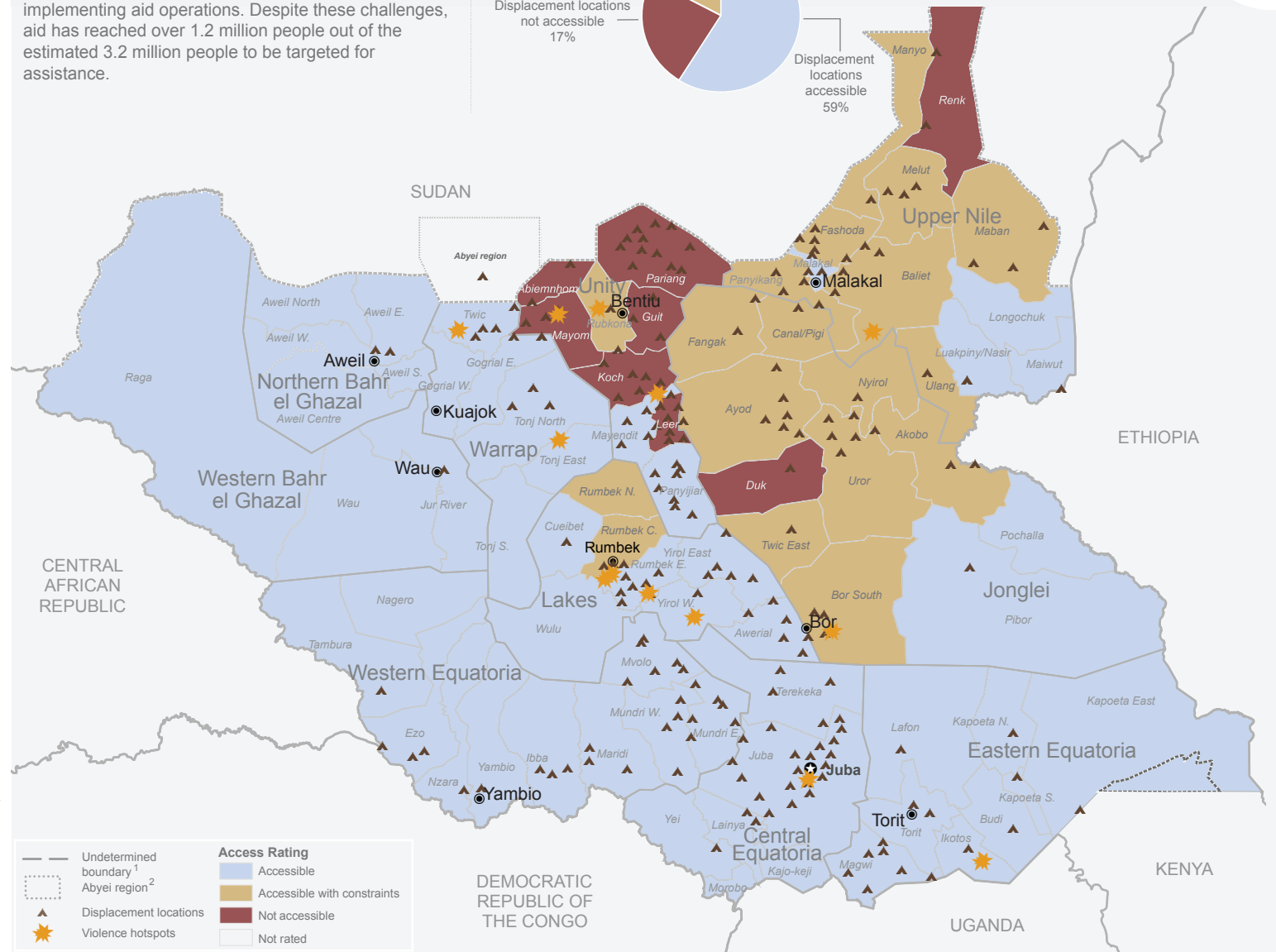
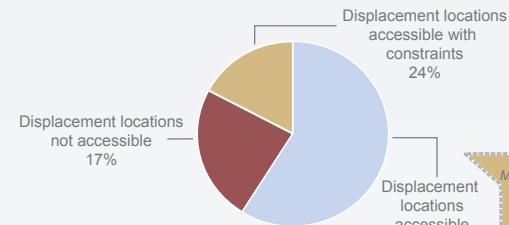
\$491m Already met

\$781m Unmet requirements



HUMANITARIAN RESPONSE

Humanitarian access was hampered throughout April by active hostilities, violence against aid workers or assets, restrictions on movements both by checkpoint incidents and cancellation of flights, and interference in implementing aid operations. Despite these challenges, aid has reached over 1.2 million people out of the estimated 3.2 million people to be targeted for assistance.



Creation date: 28 April 2014 Sources: OCHA, IOM, UNHCR, and partners Feedback: imusouth@un.org, ochasouthsudan@un.org www.unocha.org/south-sudan www.reliefweb.int

The boundaries and names shown and the designations used on this map do not imply official endorsement or acceptance by the United Nations. ¹Final boundary between the Republic of South Sudan and Republic of Sudan has not yet been determined. ²Final status of the Abyei area is not yet determined.

*The IDP figures are based on reports from partners on the ground. Majority of them have not been verified and the figures shown here are as of 23 April 2014. **The refugee figures are as of 23 April 2014.0